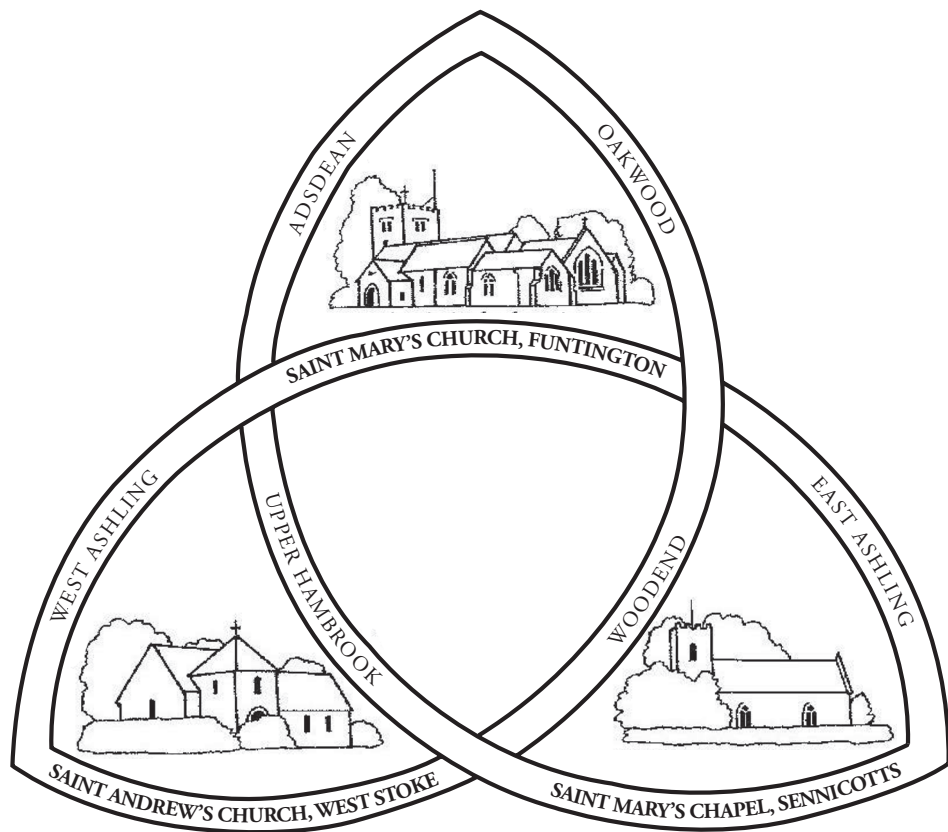


# FUNTINGTON

## Parish Magazine



MARCH 2022

£1

## **Funtington and West Stoke with Sennicotts: Who's Who**

*St Mary, Funtington; St Andrew, West Stoke; St Mary, Sennicotts [www.funtingtonweststoke.com](http://www.funtingtonweststoke.com)*

*Revd Andrew Birks, Priest-in-Charge for the Parishes of Funtington and West Stoke with Sennicotts,  
and the Parish of Chidham [rev.andrew.birks@hotmail.com](mailto:rev.andrew.birks@hotmail.com) 01243 341323*

Archdeacon	<i>The Venerable Luke Irvine-Capel</i>	
Rural Dean	<i>Father Martin Lane</i>	573228
Churchwardens	<i>Nick La Hive (St. Mary's Funtington)</i>	576266
	<i>Claire Hoare (St. Mary's Funtington)</i>	575464
	<i>Caroline Noble (St. Andrew's West Stoke)</i>	07540 690212
PCC Secretary	<i>Carolyn Watt</i>	575566
Treasurer	<i>Tricia Dry</i>	07788 506213
Gift Aid Secretary	<i>James Rank</i>	784480
Gift Aid Treasurer	<i>Neil Watt</i>	575566
Electoral Roll Officer	<i>Andrew Lillie</i>	576755
Choir Director	<i>Vacant</i>	
Church Room Bookings	<i>Vacant</i>	
LaMoC Co-ordinator	<i>Kay Knowles</i>	575406
Safeguarding Officer	<i>Tony D'Alton</i>	574360
Parents & Toddlers Group	<i>Julie Morrow</i>	575356
Organist	<i>Mark Wapshere</i>	820712
Magazine Editor	<i>Anna D'Alton</i>	<i>editorparishmag@gmail.com</i>
Magazine Deputy Editor	<i>Jo Laird</i>	<i>jml@laird.uk.net</i>
Magazine Advertising and Distribution	<i>Anna D'Alton</i>	<i>anna@anna-dalton.com</i> 574360
<b>St Mary, Funtington:</b>		
Sacristan	<i>Kay Knowles</i>	575406
Young people's church leader	<i>VACANT</i>	
Bells: Tower Captain	<i>John Kitchener</i>	788338
Steeple Keeper	<i>Andrew Rose</i>	573168
Church Flowers & Brass Rotas	<i>Denise Foster</i>	574251
Prayer Group	<i>Jane Gummer</i>	573002
<b>St Andrew, West Stoke:</b>		
Flowers	<i>Barbara Cowans</i>	575614
<b>St Mary, Sennicotts:</b>		
Advisory Council Secretary		574514

### **Disclaimer**

We are grateful to our advertisers for their support. While we cannot endorse any particular advertisement, we believe that our advertisers offer good service at reasonable prices and encourage our readers to patronise them. The editor is very happy to accept material from contributors, but the views expressed in such contributions do not necessarily reflect the position of the magazine, the parish or the Church.

## Letter from Father Andrew, Priest-in-charge

As I write this, we are approaching the period of Lent, a period of reflection, meditation and prayer in preparation for Holy Week and Easter. This year we will be able to recognise and celebrate Holy Week and Easter properly given that most of the restrictions around Covid have been removed. It is a time we set aside each year to remember the love of God that is poured out through Christ Jesus on the cross in His death, and His defeat of death, sin and Satan in Christ's death and resurrection.

We begin Lent with Ash Wednesday, as a day to help us to have a penitent mind throughout the season of Lent. Therefore, we have the imposition of Ashes as a reminder to us that in sin we will return to the dust from which we are formed (*Genesis 3:19*). While the imposition of ashes reminds us of our mortality and our sin, it also reminds us of Jesus' defeat of death and sin on the cross, and the atonement for our sin by His blood (*Ephesians 1:7*). The priest will make the sign of the cross with the ash, we are marked with the cross upon our forehead, redeemed by Christ Jesus, who secured for us eternal redemption from sin and eternal life (*Matthew 28:16-20*). The ashes which we use are made from the palm crosses which are burned from the previous year.

During Lent, we remove all flowers from church and enter a period of sombreness. The liturgical colour purple is used by the church to remind us of the character of the season - purple is used as a colour of penitence. Lent is 40 days long as a reminder of Christ's 40 days in the wilderness, and His defeat of temptation (*Matthew 4*). We are reminded that Jesus was also tempted and that He stood firm against Satan's temptations.

Our reading for Ash Wednesday this year includes *2 Corinthians 5:21*, which says, "*For our sake he made him sin who knew no sin, so that in him we might become the righteousness of God.*" As you begin Lent remember God became sin for your sake by taking on our sinful flesh and dying on the cross to atone for our sin with His blood. He freed you from them forever; and as He rose from death, you too shall be resurrected from death to Eternal Life, being made into the righteousness of God as you are justified and forgiven in Christ. Lent, too prepares us to receive God's reconciliation in Christ Jesus on Easter as we celebrate Jesus' glorious resurrection and the gift of God's Grace that brings us forgiveness, Salvation, and Life Everlasting

As we come out of Lent, we enter the period known as Holy Week. We shall begin Holy Week with Palm Sunday, in which we carry palm crosses in remembrance that as Jesus rode in triumphantly, those gathered laid palm leaves in the road to welcome him, akin to a 'red carpet'. We will have details of all the service to be held during Holy Week and Easter Day in the April Parish Magazine. We will be having a 'walk of witness' from St Mary's Funtington to St Wilfrid's and then on to St Mary's Chidham on Good Friday

– starting at 10am at Funtington and ending at 3pm at Chidham – with soup and a roll and drinks at St Wilfrid’s! If you would like to join us for the walk, that would be wonderful to have a good number, but you can also join us for the services at all or any of the three churches along the way. Check the website for more details of service times!

Easter Morning, we will start at dawn on the shoreline at Cobnor with a fire, communion and then have a small breakfast of coffee and croissants. From the fire, we will receive the first light of Easter to light the paschal candle. The flame will then be transported to St Mary’s Chidham where the church paschal candle will be lit. Traditionally the Paschal candle is lit on Easter morning and burns at every service until Pentecost. We also use the paschal candle at all ‘life events’ – weddings, baptisms, and funerals – it is a symbol of Christ’s light. The Paschal candle, representing the light of Christ coming into the world. This represents the risen Christ, as a symbol of light (*life*) dispelling darkness (*death*).

This Lent, please make sure that you don’t just give something up for Lent but take on something new! More importantly as this is a time of reflection, and preparation, make sure you set some of the time aside for your personal relationship with God.

**Fr Andrew.**

### **St Mary’s Funtington Food Collections**

We have been collecting for **Stonepillow** during January and February. Thank you all for your generous donations which will soon be on their way to Stonepillow. During March and April, we will be collecting for the **Chichester Foodbank**.

Chichester District Foodbank started 11 years ago to meet the growing need for help for those in crisis. It covers the entire district from Midhurst and Petworth in the north, down to Selsey and the Witterings on the coast and out as far as Southbourne in the west. Since starting, it has fed just over 28,000 people, through its 3-day emergency parcels. Since the pandemic, numbers have increased dramatically - by 62% in 2020 and a further 24% in 2021, when it fed about 6,200 people. Many of those needing the help are employed but on a low income. There is also a huge increase in those struggling with mental health issues as well as those escaping domestic violence situations. The Foodbank also provides holiday lunch packs for school children during the 3 main holidays. This scheme is for children who are entitled to free school lunches. At Christmas it helped 825 children across the district. Perhaps surprisingly, there is quite a need in Funtington, and all our donations go to help those locally. The current shortages include: kitchen roll, disposable razors, tinned fruit, tinned potatoes, sponge puddings, tinned tomatoes, long life milk. But any donation is welcome.

***Pippa Kerr and Neil Watt***

## TO BE A PILGRIM

To be a Pilgrim means to be a traveller on a journey, to a Holy place or shrine in company with others. For the Christian it means to follow Jesus Christ into God's nearest presence. A hymn proclaims it 'O come to the Father through Jesus the Son, and give him the glory, great things He has done'. He is, so to speak the key to opening the door into God's presence.

I have found it helpful to write these articles for our Parish Magazine, and to post them out to other friends, who are further away. It makes me feel connected again and gives me the opportunity to commiserate with others as occasion arises. As they say, 'a burden shared is a burden halved'.

We all need the companionship of our fellow human beings, in our journey through life, especially when we live alone. I appreciate those of you who have kept in touch with me or helped me in various ways.

Our private prayers and devotions are important too. We need to take time every day to pray for ourselves and for others. Jesus said, 'ask and you will receive, seek and you will find, knock and the door will be opened to you'.

We also need to worship collectively in our local Churches. To be part of the Christian Community. This is vital if we are to grow in our Christian lives. I am glad that this facility is available in our parish, and I was delighted to be back in St. Mary's, Funtington among my Christian friends.

So let us persevere in difficult times, looking to Jesus the author and perfecter of our faith.

*'We are pilgrims on a journey, we are travellers on the road.  
We are here to help each other, bear the burden and carry the load'.*

***Jane Gummer (March 2022)***

### **In Memorium Captain Kit Phillips**

It is with great sadness that we announce the death of Kit Phillips who died on 9<sup>th</sup> February 2022. Kit was the representative and Treasurer at Sennicotts for many years. His funeral will be on Thursday 24<sup>th</sup> February at St. Mary's Sennicotts. Our thoughts and prayers are with Mary and his family.

## Bible Readings at St Andrew, West Stoke and St Mary, Sennicotts

March 2022				
<i>Date:</i>	<i>St Andrew, West Stoke</i>		<i>St Mary, Sennicotts</i>	
Sun 6 <sup>th</sup> March	10.00 a.m. HC	Deut. 26.1-11 Luke 4.1-13	-	-
Sun 13 <sup>th</sup> March	-	-	9.00 a.m. HC (BCP)	Gen. 15.1-12 & 17-18 Luke 13.31-35
Sun 20 <sup>th</sup> March	10.00 a.m. HC	Isaiah 55.1-9 Luke 13.1-9	-	-
Sun 27 <sup>th</sup> March	-	-	9.00 a.m. HC (BCP)	Exodus 2.1-10 Luke 2.33-35
Sun 3 <sup>rd</sup> April	10.00 a.m. HC	Isaiah 43.16-21 John 12.1-8	-	-

### Electoral Roll 2022

The Church Electoral Roll is due to be revised later this month, and anyone who is not already on the roll and would like to have their names added, should complete an application form.

The Electoral Roll is the basic list in every parish of all those entitled to vote in elections within the Church of England, and to take part in the Annual Parochial Church Meeting (APCM).

Please contact Andrew Lillie (01243 576755) for an application form.

### **PANCAKE DAY!**

*Tuesday 1<sup>st</sup> March 2022 4 pm*

*Come and join us for pancakes and fun In the Church Room, St. Mary's Funtington. Everyone welcome! FREE ADMISSION*

*(just email [editorfuntingtonmag@gmail.com](mailto:editorfuntingtonmag@gmail.com) to let me know and to make sure we have enough pancakes to go around!)*

## News from the PCC

The meeting of the PCC in January included a visit from the Archdeacon of Chichester (Luke Irvine-Capel) and the Diocesan Secretary (Gabrielle Higgins.) They both addressed the meeting and took questions regarding the 'Parish Share', which is the amount of money each parish is asked to pay towards mission and ministry and includes the incumbent's stipend. The Archdeacon explained the difference between the Parish Share and Parish Ministry Costs which was informative. He encouraged a 'spirit of generosity' in giving and asked the PCC to be supportive of needy parishes. He also suggested producing a 'Mission Action Plan' both to deepen our faith and broadcast the Christian Gospel in the locality.

The planning application for the repairs and changes to the church roof is with the SDNP. We are mindful of safeguarding our environment by using renewable energy through applying to incorporate as many solar (PV) panels as possible. If you would like to see the detailed plans and submit a comment the reference is SDNP/21/04706/FUL.

The PCC agreed that, after several years of no increase in the hire charge for the Church room, it be increased to £15 per hour. It is important when hiring the room that adequate time is included for setting up and clearing away of activities.

The Annual Parochial Church Council Meeting (APCM) is on 13<sup>th</sup> April at 7pm in Church. During this meeting the Churchwardens and PCC for the forthcoming year are elected. The annual accounts, reports from the Priest-in Charge and church related groups are also presented. This is an open meeting, everyone in the parish is welcome, although voting is restricted to those on the electoral roll. Please do consider coming. There are spaces on the PCC; if you think you may be interested in serving on the PCC please speak to either of the Churchwardens or Fr. Andrew.

*Secretary to the PCC*

### **Music Review - The London Concertante**

At Christmas my son (surprisingly) booked tickets for us all to go the Chichester Cathedral to listen to the London Concertante playing Vivaldi's Four Seasons followed by some Christmas music. I wasn't at all sure about it with just 2 violins, a viola, double base, a cello and a harpsicord. Not really my thing.

How wrong I was - it was the most amazing concert I have ever been to. They completely captured the audience with their wonderful recital. And, of course, the Cathedral is an amazing setting.

They will be at the Cathedral again on Saturday 12<sup>th</sup> March this time playing 'Music from the Movies'. I have already bought tickets!

Founded in 1991, London Concertante is a UK-based chamber orchestra, regularly performing up to and over one hundred concerts per year, making it the busiest ensemble of its kind in the country.

*Jo Laird*

## June 1944

The summer of 1944 saw the arrival of the Nazis' new weapon, the V1 flying bomb, dubbed the "doodlebug". These bombs had a very distinctive, loud, ominous sound quite unlike any other. This engine noise would suddenly cut out and the wretched device would drop, causing massive destruction. They were programmed to follow a direct path, and as long as one was not immediately under that path, one was relatively safe.



It was June, and as a newly qualified medical social worker I was enjoying my first job as a Locum at St Nicholas' Hospital, Plumstead, in South London. I was living in a hostel at Blackheath and the daily journey to work involved a long bus ride. Hitler's target in that area was the Woolwich Arsenal and the bombs appeared to

be timed to fall at a change of shift, assuring maximum casualties.

At the same hostel was a university friend of mine, working in a Lewisham hospital, and together every evening after supper we used to watch these bombs making for their target. Until one evening a bomb coming up against an enormous cumulus cloud changed course and flew directly towards us. We fled and never did that again!

On another occasion I was making my way by bus to the hospital early in the morning and suddenly the bus driver noticed an approaching flying bomb following the line of our road. We were in its direct path and the bus driver turned left up the first road he came to, to get out of its way. It was a narrow street where the shop owners were arranging their outside displays. We heard the explosion, and the problem then came of how to return to the main road as there was no room for the bus to manoeuvre. In the end the driver had to back all the way he had come which took quite a long time.

When I eventually arrived at the hospital, I found all the patients from the front wards were being evacuated, as all the glass windows had been blown in. My office was in the front of the hospital and had I arrived on time, I might well have been a casualty. Who says there are no Guardian Angels?

*Bee Kenchington*



## Funtington Parish in the Past - The Evacuees at Funtington Lodge

At the beginning of the Second World War, one group of lucky children with a teacher from Tooting were evacuated to Funtington Lodge and went to Funtington School. Peter Mayhew was evacuated there in 1939 with his brother and sister and I have found a blog on the Internet about him written by his daughter Natalie<sup>1</sup>.



Funtington Lodge had been bought by George and Margaret Booth in 1926 who had six children ranging from 9 to 19. They had extended the 200 year old house with a music room large enough for 60 guests and an outdoor swimming pool. As their children moved away, they welcomed refugees and musicians before the war and they continued to welcome children and other locals during and after the war.

George Macaulay Booth<sup>2</sup>, was a shipowner, a tanner and a director of the Bank of England. He had a tireless energy and a classless approach to others. In the First World War he had accepted the role of Director General of the Ministry of Munitions without pay. In 1939 with no full time job, he was able to spend more time in Funtington.



At Christmas 1939, the Chichester Observer reported that “ A unique entertainment was prepared by Mr and Mrs Booth and family of Funtington Lodge. A party of seven evacuees from Selincourt School in Tooting are billeted here and a delightful sketch entitled **Snow White and the Seven Dwarfs** was presented in the beautifully equipped theatre at Funtington Lodge. It was received with the greatest admiration by young and old who all expressed their appreciation of what had been done by the Booth family”.

Peter Mayhew seems to have settled down well at Funtington Lodge and made friends with their youngest son Zachary. In his diary he remembered a German bomber that crashed nearby which disturbed him very much. I also recall seeing that plane with the German pilot, unable to bail out.

Peter Mayhew enjoyed his time in Funtington so much that he stayed throughout the war. After his National Service he lived in London with Zachary Booth, who helped him to embark on a successful career in the film industry. He returned to his much loved Sussex where he died at the age of 51.

Marion Lombard was one of the teachers who was evacuated to Funtington Lodge. George Booth had bought the Corn Exchange in East St before the war with plans to build a theatre. George Booth told Marion who was a ballet teacher, that if she wanted a ballet school of her

own she should come to him. He bought the barn behind the Corn Exchange which in 1951 became the Marion Lombard School of Dancing.

Several local octogenarians can still remember visiting Funtington Lodge to watch plays, to swim and for dancing classes. I cannot remember going there in those days but the architect, Robert Headley, bought the music room in the 1980s, I was a reserve player there for his weekly bridge party! Robert Headley is well remembered for starting the Funtington Music Group which is now the Chichester Music Society.



Evacuees playing in the swimming pool at Funtington Lodge (Peter Mayhew front left)



Two 1939 Christmas cards from Funtington School have survived. I was given one by Mary Bone and I hope to write about her war memories. Unfortunately she never told me about her schoolmate Peter Mayhew.

<sup>1</sup>The author's daughter Natalie gave me permission to include some of the pictures from her blog in this story (Find the whole blog by searching Funtington Evacuees)

<sup>2</sup>The Man of Push and Go. The Life of George Macaulay Booth by Duncan Crow.

Geoffrey Boys

## ‘Beardies’

When I was young I would browse through the ‘Observer Book of British Birds’ and I came up with a list of fantasy birds that I would have loved to have seen but at the time thought the chance of seeing one was zero. On that list was the Bearded Tit, a bird at the time of my youth could only really be seen in East Anglia. As a youngster Suffolk and Norfolk was half way across the world!

Being called a Bearded Tit is really a misnomer on a couple of accounts! The male’s standout plumage feature is his long black handlebar moustache, not a beard. His name apparently comes from the fact that he has a white chin, seen on both sexes, the male’s is more obvious than the females, which was thought to look like a beard such as that worn by Father Christmas. The other misnomer is calling it a ‘Tit’. It does not



belong to the titmice family to which our more familiar Blue and Great tits belong. This bird is more correctly known as the Bearded Reedling. There has been much debate by taxonomists as to how to classify this species. Arguments have been made to include it in the families of tits, larks and parrotbills, but currently it has been awarded a family of its own, called ‘Panudae’, for it appears to be a unique species. Panudae comes from the Greek meaning

‘long tailed kind’

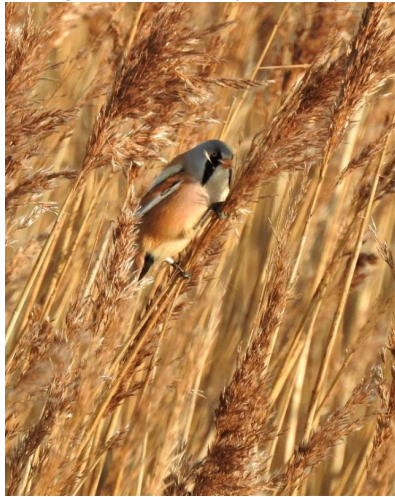
These birds have slowly spread and now although uncommon can be seen locally in the right habitat. As its proper name suggests, the Bearded Reedling, is found almost exclusively in deep reed beds. Locally there is a good population at Farlington Marshes, and on a bright sunny winter’s day they can often be seen feeding amongst the reeds

opposite the information hut on the path which runs along the A27 or in the reeds bordering the lagoon on the west side of the marshes.

They are gorgeous birds to watch as they harvest the seed from the reeds. They move from reed head to reed head, the one they land on bending under their weight, the one they left will spring back upright. The movement between the reeds sends them swinging like a pendulum, and the birds cling on industriously trying to harvest the seed from the ears of the plant. Some will fly and land at mid stem level and then agilely inch their way up to the source of food at the top of the reed. They are very entertaining.



The diet of these Bearded Tits is very interesting. During most of the year they are insectivorous



birds eating mainly invertebrates which usually include midges, caterpillars, flies and spiders. In fact, a good time to spot these birds is usually in the spring when they can be seen flying over the reed beds catching insects to feed their new born nestlings. At this time of year watching them is usually restricted to quick flashes as they fly across the top of the reeds before diving deep into their cover. If however you catch them in the winter season they will be gorging themselves on the seeds produced by the reeds. This is their winter diet; rather cleverly they switch from being an insectivore to a 'veggie', there not being enough insects around during the winter to

sustain them. They are not really designed as a seed eater and so they have to collect some gravel which they retain in their crops to help grind the seeds when they are eaten to make them nutritional. By doing this, these little birds are able to spend winter here and we are fortunate to have this remarkable and beautiful bird around all year.

***Kevin Tarrant***



*'Restoring buildings, walls and landscapes'*

# AIM

Groundworks, Construction & Renovation



TEL: **01243 389783** MOB: **07825 744732**

EMAIL: **office@aim.works** WEB: **www.aim.works**

AIM Office, The Yard, Aldsworth Manor Farm, Emsworth, Hampshire, PO10 8QT

Leading the way in providing an **AFFORDABLE PROFESSIONAL** service



## WESTMINSTER LAW

Wills~Estate Planning~Probate



If you are over 65 it will only cost you £75\* to make or update your Will.

We are also Lasting Power of Attorney Specialists - only £85\* each LPA if instructed during the Will appointment.

*Our prices include home visits and Inheritance Tax advice.*

Call us now for a no obligation chat on  
**02392 706980**

[www.westminster-law.co.uk](http://www.westminster-law.co.uk) email: [info@westminster-law.co.uk](mailto:info@westminster-law.co.uk)  
Westminster Law Ltd, Grassmere Way, Waterlooville PO7 8QD

\*ALL OUR PRICES INCLUDE VAT. These very special rates are only available if you are aged over 65.  
Our normal low price for a standard single Will is £125, or £195 for a couple.



**Berry-Middleton Ltd**

Flintwork Stonework  
Brickwork Roofing  
Hard Landscaping

**Specialists in Flintwork**

*maintaining the very best tradition*  
Local Company based in Hambrook

**Tel**

**01243 572454**

**07771 512012**

[www.berry-middleton.co.uk](http://www.berry-middleton.co.uk)

## STANSTED PARK

ON THE HAMPSHIRE/SUSSEX BORDER



### VISIT STANSTED HOUSE

Explore the Mansion rooms and superb Servants' Quarters. Uncover the history of the Earls of Bessborough and previous owners of this beautiful estate dating back to the 12th century.

The House with its private Chapel, splendid mansion rooms and fully furnished Servants' Quarters is open to visitors on Mothering Sunday and from Easter to the end of September.

[WWW.STANSTEDPARK.CO.UK](http://WWW.STANSTEDPARK.CO.UK)

Stansted Park Foundation, Stansted Park, Rowlands Castle, Hampshire, PO9 6DX. 023 9241 2265

*Beauty*so*Essential*

Natural Beauty and Wellness

Holistic beauty treatments, Aromatic massages,  
Essential Oil education

**Sadie Middleton**  
B.A.B.T.A.C, I.I.H.H.T

We combine traditional beauty treatments with gorgeous pure and natural essential oils for ultimate skincare and relaxation and a holistic wellness experience every time.

Tel: 01243 920179 Mob: 07887 748501

[www.beautysoessential.co.uk](http://www.beautysoessential.co.uk)

formerly *The Beauty Oasis*, now based in Westbourne, mobile service available.

**J & B Interiors**



J & B Showroom  
Eastmead House, Midhurst  
Road, Lavant, Chichester,  
PO18 0DB

Jan Palmer 07718 161009  
Becca Mousley 07711 721499

# Growing Knowledge



OAKWOOD  
SCHOOL



"The quality of the pupils' academic and other achievements is excellent." ISI Inspection Report 2017

Please contact the school office for more information:  
Oakwood Preparatory School, Chichester, West Sussex PO18 9AN

01243 575209 | office@oakwoodschool.co.uk | oakwoodschool.co.uk |



[www.smithyandco.uk](http://www.smithyandco.uk)

## NEIL RODGERS

Carpentry & Joinery  
Fitted Wardrobes & Doors  
Painting, UPVC Windows  
Fascia, Soffits & Cladding  
Property Maintenance

call **01243 604933**  
or **0779 980 1146**

## Fox & Hounds *Funtington*

FOOD SERVED ALL DAY  
FUNCTION ROOM  
DOG FRIENDLY  
LIVE MUSIC  
LARGE PATIO GARDEN

01243 575246

[www.foxandhoundsfuntington.co.uk](http://www.foxandhoundsfuntington.co.uk)



# Remedial and Sports Massage

in the Funtington area

Deep tissue for specific problems

Relaxing therapies for relief from daily pressures

Home visits or

Local practice

20-years experience

[www.twsportsmassage.co.uk](http://www.twsportsmassage.co.uk)

[aw5050@btinternet.com](mailto:aw5050@btinternet.com)

07721 853 499

Tony Wharton Bsc (Hons), LCSP (Phys)



## Good Neighbours

Funtington, the Ashlings, West Stoke and Sennicotts

Good Neighbours is a volunteer group for local residents in need of a helping hand. **We can offer:** transport, befriending - just calling in for chat and a cup of tea and social events. – **if in doubt just ask!**

Need some help? Would like to volunteer? Know someone who needs some help or just to find out more call **07761 027416** and leave a message. We will get back to you.

## COMPUTER ASSISTANCE

Home & Business Support  
Professional & Friendly Computer Services

01243 370876

[WWW.COUNTRYSIDECOMPUTERS.CO.UK](http://WWW.COUNTRYSIDECOMPUTERS.CO.UK)



Remote Services

System Maintenance

Mac/PC & Laptop Repairs



01243 370876 | 07798 728886

[help@countrysidecomputers.co.uk](mailto:help@countrysidecomputers.co.uk)

## ELECTRICAL CONTRACTORS



DOMESTIC & COMMERCIAL  
INSTALLATION & MAINTENANCE

NEW FUSEBOARDS

DESIGN & INSTALLATION

TESTING, INSPECTION & FAULT FINDING

LOCAL  
01243

EXTRA LIGHTS / POWER

389566

FULL & PARTIAL REWIRES

FAMILY RUN BUSINESS

FREE  
0800

PART P REGISTERED

8600 812

TRADING STANDARDS  
APPROVED

[sales@mja-electrical.co.uk](mailto:sales@mja-electrical.co.uk)

[www.mja-electrical.co.uk](http://www.mja-electrical.co.uk)





# Moore's Traditional Funeral Directors

We can arrange all types of funerals from a non-attendance to a simple cremation, through to a truly bespoke funeral service.

All at very competitive costs yet maintaining a fully professional, caring service to our families.



*“ Devoted to the families we serve..... not profits ”*

Each of our funeral homes have a dedicated member of staff who will guide and support families from your first call to us.



11, North Street, Havant. Tel: 02392 175462  
302-304 Main Road, Southbourne. Tel: 01243 374644  
5 Hambledon Parade, Waterlooville. Tel: 02392 641366  
enquiries@moores-funeral.co.uk | www.moorestraditionalfuneraldirectors.co.uk

## Specialist tree pruning

Trees are beautiful, but in the wrong environment they can out-grow their welcome.

A key factor in gardens is space and light, two things trees also love to use.

Based in Funtington, I offer a service that will keep your trees under control, looking natural and transform any outside space.



Call Alfie Reed Tree Care on:  
**07453492863**

## Theirs is a fragile but hardy celebration...in the very teeth of winter

Believe it or not, gents, but time was when us menfolk actually wore shirts. Not just at work, but at the weekend, while digging the veg patch or mending the car. (Yep, that literally used to be a thing, mending your own car.) Nowadays, we're mostly to be found sporting leisurewear on our days off, or if there's a spot of digging to be done, an old Oasis t-shirt.

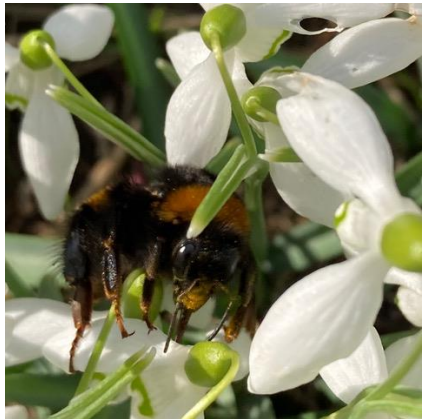
But there's a bee-keeping saying that reminds us when we can take our first look inside the hives: "if you can work outside in shirtsleeves it's warm enough". Meaning that usually one day in late March it's going to get to around 14°C (57°F) and we can safely open the hives without risk of chilling the bees, and us bee-keepers can don our bee suit, grab the smoker, and head for the hives.

Opening up a beehive after the winter is full of trepidation. Has the colony survived? Did they find all their honey stores? Is the queen bee healthy and laying eggs? Did a pesky mouse take up residence to avoid the storms? Of course, we'll generally know if the colony has survived as we've seen them coming and going on the occasional warm day in February, but we really want to know that each of our hives is full of bees and is building up to make the most of the spring nectar.

Talking of storms, as I write, Storm Eunice is blowing a hooley across the paddock, but only a week ago it was glorious and the bees were making the most of the warm weather and the snowdrops in full bloom. We spotted several Buff-tailed bumblebees – they will be queens this time of year, recently woken from their hibernation and so huge they bend the flowers when they land on them – and our honeybees, all gathering the snowdrop's bright orange pollen.

This early source of pollen is so critical to bees and pollinators. Like us, they too need a balanced diet, and while nectar and honey gives them a source of energy, they get their minerals, proteins, and vitamins from pollen.

And at this time of year, with lots of hungry larvae to feed, they will be searching out pollen wherever they can find it; on snowdrops, hazel, lenten rose, and winter honeysuckle. So if you have any of those in your garden keep an eye out for your first pollinator sightings of the year.





As for us, well, we've been hiding out in the garage this last few weeks, drinking coffee, listening to BBC Radio 6, and assembling all the beehive parts we bought in the winter sale. This all comes flat-packed, so there's been lots of gluing, hammering and a little bit of swearing. Oh, and fretting about what to wear to my upcoming talk to the Funtington & West Stoke WI – I might have to put on a shirt...

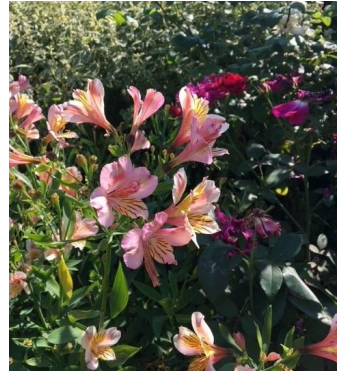
***Jason & Kate Boswell***

### **Alstroemeria**

I am dividing quite a big patch of Alstroemeria. It flowers from June to October, sometimes even November. The more you pick the more it grows.

*If anyone would like some (free to a good home) contact Anna D'Alton*

[anna@anna-dalton.com](mailto:anna@anna-dalton.com) Mob 07523 165099



### **An East Ashling resident ...**

During the power cut after the storm!!

## A New Awakening

After a long, cold and dark January which seemed to go on forever, hopefully we are finally over the worst of winter so I went to see if the snowdrops and other winter flowers were in bloom and yes, they were!!



On my way to the copse I discovered Winter Helleborus with their beautiful nodding flowers.

Here is Cornus 'mas,' a very early flowering large shrub with acid-yellow flowers which is not as often seen as it should be as it provides valuable nectar for the bumble



bees when they come out on a sunny day in search for food. Cornus 'mas' is just beginning to flower, and it is a spectacular sight when in full bloom!!

Here is cyclamen 'coum,' very happy in woodland and shady conditions. It has self-seeded over the years in various shades of white and pinks.



And finally... the snowdrops!!! They like lots of moisture, which they definitely had as the rain helps these dainty little flowers to show themselves amongst the brown fallen leaves. They will self-seed prolifically if the conditions are right. And a clump of double



snowdrops with layers of tightly packed petals.



And lastly... my first primrose this year, one of many more to come!

So if it is a bright day, do go out into your garden and discover the lovely little flowers of spring.... be near them..... and breathe with them.



*The author has a garden in West Ashling dedicated to wild flowers and unusual plant and tree species*

## CHICHESTER MUSIC SOCIETY

***Wonder who we are?*** - We used to be called the Funtington Music Group. Now because we hold our concerts at Chichester University (**CMS**) we felt we should change our name to one that was more suited to our venue.

***Wouldn't you like to learn whilst you listen?*** Our performers talk about their pieces - so much more interesting and you will leave our concerts knowing a bit more!

***Read more about the history of CMS and our 2022 programme*** on [www.chichestermusicociety.org.uk](http://www.chichestermusicociety.org.uk)

**So why not join us** and enjoy excellent concerts and excellent company!

***Our next concert is on Wednesday 9th March-*** Chris Beaumont xylophone with Derek Garden Piano. Please go to our website to find out more about Chris Beaumont and his love of astronomy and his friendship with Patrick Moore which led to his taking up the xylophone professionally. The programme will include works by Patrick Moore and others. Plenty to learn at this concert – most intriguing. Don't miss it!



***Entrance by Ticket Application only*** due to covid precautions. **Visitors £15**

***If having sampled one of our concerts you found it was so enjoyable, come and join us as a member and enjoy a substantial discount on ticket costs! See our website for details.***

***For Tickets please contact Elizabeth Stanley 07973 410407***

***or [elizabeth.stanley617@btinternet.com](mailto:elizabeth.stanley617@btinternet.com)***

***Cheques payable to Chichester Music Society and sent to Elizabeth Stanley, The Granary, Lordington, Chichester PO18 9DB, or online (sort code: 60-05-34 / Acc.No: 20505345 / Ref: your surname)***

## Letters to the Editors

*Further to the two previous articles on Walter Scott-Elliott*

Walter Scott Elliott bought Adsdean house from Lynn Friend in the early sixties. He had his house in Dumfries, which as a Family we visited, I was about 10 years old.

He shared a very valued Syndicate shoot between Dennis Hoare, Adsdean Farm. Dr. Hall Hall of Funtington Down House and Leslie Palmer, Rookery Farm. Apart from all the owned land, it included a fair amount of forestry commission land. It was a large area, with all wild pheasants.

I remember him showing me his gun collection at Adsdean house, which as a young man, I was in awe of, especially his Elephant gun! He had been big game hunting in India and Africa. He was a proper 'gentleman', though possibly a little radical to become a labour MP!

*Tim Hoare, Adsdean Farm*

## Charity talks at St Mary's Family Services in March and April

There will be a short talk on the BEATS charity during the Family Services on 6<sup>th</sup> March and 3<sup>rd</sup> April with an opportunity to donate to the work of BEATS (British Earthquake And Tsunami Support)

BEATS is a small local charity, based in Bosham, which was set up initially to help the child survivors of the Boxing Day Tsunami of 2004 which killed 170,000 people in Banda Aceh, Sumatra. BEATS is now principally working in Indonesia partnering with four organisations, YACAN & YASAH in Medan who run Children's Homes, YSI, based in Banda Aceh, who run disaster preparedness training courses and sewing courses for widows, and GBI Church in Ambon who are supporting earthquake victims through a child sponsorship programme, a loan scheme for start-up businesses, and a home-rebuilding project. Due to its small size BEATS has no UK administrative costs and 100% of donations goes towards helping the needy, principally in Indonesia. For more information, please come along to the family services or look on the BEATS website <https://beatscharity.co.uk/>.

*Neil Watt*

## News from the WI

We had Yvonne Price to speak to us about 'Women Pioneers in Medicine at the last meeting, We learned how some women had to disguise themselves as men in order to enrol in medical school and practice as doctors. We were also told how these pioneers had influenced hygiene practices, not only in hospitals at home, but also in a war situation where soldiers were dying from infections rather than from their injuries. The pioneers were also instrumental in promoting specialised care for women and their children, not routinely available at that time. We were all so entranced that you could have heard a pin drop! See page 27 for details of next WI Meeting. *Sue Nicholson*

## Letter from Gillian Keegan MP

We're very fortunate to have some amazing charities and support services in our area. Last month, I visited the Apuldram Centre that supports adults with learning disabilities locally. The Centre has been running for 30 years and offers daytime occupational activities such as cookery, gardening and woodwork, as well as supported living. I met with Rachel, the Chief Executive, who showed me around. It was wonderful to meet the staff and those using the centre's services and I had a brilliant time joining in with a silent disco and exercise classes. As the Minister for Care, I'm always keen to better understand what can be done to support these services, it is a subject that is close to my heart as an aunt to a boy with Downs Syndrome. I am currently supporting the Downs Syndrome Bill to become legislation on behalf of the Government. It will place a duty on local authorities to assess the needs of those with Down's Syndrome and to plan for these accordingly.

Just down the road in Bosham, is St Wilfrid's Hospice, which is another much-loved local service. 2022 is a particularly special year as it marks the Hospice's 35<sup>th</sup> year of operation and they've supported over 20,000 patients during this time. Since their move into their new facility, the Hospice has been able to offer 18 rooms as well as a 'hospice at home' service that enables people to spend their final days in their own homes. The team have faced huge challenges during the pandemic, balancing the need for people to visit their loved ones whilst also keeping patients safe but Alison, the Chief Executive, and her team have done an incredible job. We're so lucky to have an asset like St. Wilfrid's in our area.

There's also been some big news in the Department for Health and Social Care. Subject to consultation and a vote in Parliament, vaccinations will no longer be a condition of deployment for health and social care workers; ensuring our response to Covid-19 remains proportionate and balanced as we build our wall of defence against the virus. This decision has been made to reflect the change in circumstance as we've moved from Delta as the dominant variant to Omicron, which is less severe. That said, I cannot stress enough the importance of getting a vaccine if you're eligible, to protect you and those around you. There are thousands of appointments available across our area, which you can book online on the national booking website or by calling 119.



## YOUR ADVERT HERE!

Would you like to advertise  
in this magazine?

Please email:  
[parishmagfuntington@gmail.com](mailto:parishmagfuntington@gmail.com)

## HALLIDAYS RESTAURANT FUNTINGTON

Tel: 01243 575331

OPEN Wednesday - Friday  
Lunch  
Wednesday - Saturday Dinner  
and Sunday Lunch  
[www.hallidays.info](http://www.hallidays.info)

## Adsdean Farm Shop Funtington 01243 575212

Our own Beef and free range Pork  
Local Lamb, Venison, Rabbits  
Home cured and smoked Bacon  
Our own made Sausages, cooked  
meats

Open Wed-Fri 9am-5pm  
Sat 9am-4pm

## CLOCKS WATCHES BAROMETERS BAROGRAPHS

*Vintage Fountain Pens*  
*Overhauled and Restored*  
*Home Visits*  
*Free Estimates*  
01243 783398

## East Ashling Nurseries

Bedding Plants, Geraniums,  
Fushsias,  
Hanging Baskets, Patio Plants,  
Shrubs,  
Herbaceous & Clematis  
Lye Lane, East Ashling, Nr.  
Chichester, West Sussex  
Tel: 01243 575523

## West Stoke Village Hall



...perfect for parties, meetings,  
classes, etc. Wireless broadband.  
To book visit: [www.weststoke-villagehall.org.uk](http://www.weststoke-villagehall.org.uk)  
or call: 01243 575383 or 575461

## ROGER GUNN GARDEN MACHINERY

'SALES & SERVICE'  
fast friendly reliable service, ride  
on mowers, lawnmowers  
etc. competitive prices and  
part exchange  
Located near Lavant

tel: 01243 786003  
web: [www.rogergunn.co.uk](http://www.rogergunn.co.uk)

## WEST SUSSEX LOGS

Seasoned Hardwood Logs  
Sustainably produced  
Locally sourced

All seasoned timber, cut to any length,  
delivered within three working days

To request a log delivery or enquire  
about any of the services we offer  
please contact Simon:

Telephone: 01730 814751  
or Mobile: 07950 035997

## YOUR ADVERT HERE!

Would you like to advertise  
in this magazine?

Please email:  
[parishmagfuntington@gmail.com](mailto:parishmagfuntington@gmail.com)



### LAWNMOWER JONES GARDEN MACHINERY

Contact Richard  
01243 696878 or 07584 032121  
[lawnmower.jones@hotmail.co.uk](mailto:lawnmower.jones@hotmail.co.uk)

- ✓ Repairs and servicing
  - ✓ Cylinder Mower Sharpening
  - ✓ Hedge Cutter, Shear and
  - ✓ Chain Saw Sharpening
- Over 20 years experience  
collection & delivery



### STANSTED PARK HOUSE & GROUNDS

Visit this splendid Edwardian Mansion and discover the treasures of a bygone era.

With its magnificent State Rooms, extensive Servants' Quarters and friendly guides Stansted House is an immersive 'Upstairs/Downstairs' experience.

Open Easter to September Sunday, Monday, Tuesday & Wednesday – 1pm – 5pm (last admission 4pm).  
The grounds, Garden Centre, Farm Shop and Pavilion Tearoom are open all year round.

STANSTED PARK · ROWLANDS CASTLE · HAMPSHIRE · PO9 6DX  
Telephone: 023 9241 2265 · Email: [enquiry@stanstedpark.co.uk](mailto:enquiry@stanstedpark.co.uk) · Website: [www.stanstedpark.co.uk](http://www.stanstedpark.co.uk)

### CRABAPPLE INTERIORS

BESPOKE CURTAINS, ROMAN BLINDS & UPHOLSTERY  
CUSHIONS, HEADBOARDS & BEDSPREADS AND SO MUCH MORE

AT AFFORDABLE PRICES

NO VAT - FREE SAMPLES AVAILABLE - PERSONAL SERVICE  
30 YEARS EXPERIENCE

CALL ANYTIME FOR AN APPOINTMENT & WRITTEN ESTIMATE

PAMELA QUILTER: 01243 574669 / 07749 585452  
[PAMELA@CRABAPPLEINTERIORS.CO.UK](mailto:PAMELA@CRABAPPLEINTERIORS.CO.UK)

## WILLIAM O'BRIEN PLUMBING & HEATING LTD



40 Heather Close, West Ashling,  
Chichester, West Sussex. PO18 8DR



01243 576262



[wobrien.phltd@gmail.com](mailto:wobrien.phltd@gmail.com)



[wobrien-plumbing.co.uk](http://wobrien-plumbing.co.uk)

## Social Activities

### Let's Dance (for the not so young!)

Monday afternoons (term time) 2.30pm 'til 3.30pm

St. Mary's Church Room, Church Lane, Funtington PO18 9LH

Contact: Kathryn Wignall at [Kathryn.wignall@tiscali.co.uk](mailto:Kathryn.wignall@tiscali.co.uk)

### Eucharist on Wednesdays (followed by coffee morning for all)

You are invited to come to Eucharist and coffee held every Wednesday morning at St. Mary's Church Funtington for a short service. Everyone welcome to come and join us for coffee and biscuits afterwards at 11am in The Church Room. A good time for meeting others, sharing and laughter.

### Funtington and West Stoke WI

The next meeting is on Wednesday 16<sup>th</sup> March at 7pm when Jason Boswell will talk to us about 'A Year in the Life of a Beekeeper' Jason lives locally in Funtington and I know some of you will already have tasted his delicious honey and read his articles in this magazine. Visitors are always welcome at our WI meetings in the Village Hall. Please phone Sue Nicholson for more details. 01243 574722

### Funtington Bridge Club

The club now meets every Thursday at St. Mary's Church Room, Funtington. Rubber Bridge from 1.30pm until 5pm £3 per person including tea, coffee and biscuits. Contact Roger Freeguard for details 01243 576650

## FUNTINGTON PLAYERS present

### 'OUR COUNTRY'S GOOD'

by Timberlake Wertenbaker

5<sup>th</sup> - 9<sup>th</sup> April at 7.30 p.m., at West Ashling Village Hall

Based on historical fact and on the much praised novel '*The Playmaker*' by Thomas Keneally, this play is set in the first penal colony in Australia. It tells the extraordinary and sometimes hilarious story of the attempt to put on a production of a restoration comedy with a cast of convicts, the first play ever to be performed in the new colony. Their success, achieved despite the privations and brutality of convict life, is heart-warming. Tickets priced £12 are available from 22<sup>nd</sup> February either online at [www.ticketsource.co.uk/funtingtonplayers](http://www.ticketsource.co.uk/funtingtonplayers) or by telephoning 01243 574879.

## English Spring

At first the snowdrop and the crocus bright,  
Then beautiful but deadly aconite,  
Next primroses, proud daffodils, so tall  
Adorn the bed below the garden wall.  
Through sunlit hours the birds with rapture sing,  
An earlier dawn – all telling us it's spring.  
Beneath blue skies and warm sun yesterday,  
Gloves, hats and mufflers all were put away.  
With dawn came gales and heavy driving rain  
And, in the North, snow's falling once again.  
Once more to fireside and warm clothes we cling.  
It's Eastertide and England's fickle spring!  
*Bee Kenchington*

### ***A casualty of Storm Eunice in the Church Paddock***



## **Recipe of month - Conchiglie (Shell Pasta) with Broccoli**

1 medium head of Broccoli

1-2 tablespoons olive oil

1-2 cloves of garlic

½ teaspoon dried chilli flakes

½ tin tinned anchovies (Grange farm shop has the small flat tins)

50 g (1 oz) butter

75ml (3 fl oz) double cream

145 g conchiglie

Sea salt and freshly ground pepper

Cut broccoli vertically into manageable pieces so each piece has flower and stalk, blanch very briefly (2 mins) in boiling salted water and drain well.

Heat the oil in heavy saucepan or frying pan and fry garlic gently. Add the chilli flakes, anchovies and butter. Mash the anchovies with garlic etc with wooden spoon. Add the broccoli and cream and simmer for 4 mins

Cook the conchiglie in generous amount salted water (12-14 mins) drain well and mix into the sauce. Season with salt and pepper and a bit of the parmesan.

Serve with remaining parmesan sprinkled on top. Serves 2 *Anna D'Alton*

### **MARMALADE 2022 (A few pots left!)**

In aid of the Mothers Union, the cost is £2. but please DO NOT leave messages on my landline as they are usually unintelligible!

Tel: 01243 574900 (but please don't leave messages)

Mobile: 07811 555692 (text messages preferably)

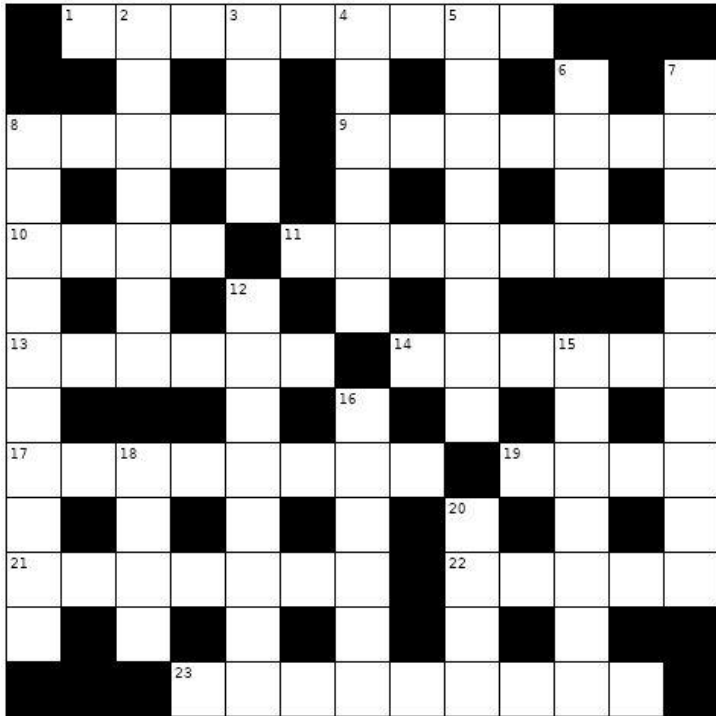
Email: [annemaddock@icloud.com](mailto:annemaddock@icloud.com)

### **Solution to Crossword No. 10**

ACROSS: 1 Longitude 8 Faust 9 Enclave 10 Open 11 Adelaide 13 Entice 14 Snatch 17 Timbuktu 19 Well 21 Nutcase 22 Okays 23 Innkeeper.

DOWN: 2 Opulent 3 Gite 4 Tweeds 5 Duckling 6 Taxi 7 Seven hills 8 Florentine 12 Schumann 15 Teenage 16 Streak 18 Moth 20 Cove.

# Crossword no. 10



## ACROSS

- 1 John Harrison's clocks solved this problem (9)
- 8 Operatic bargainer with the Devil (5)
- 9 Part of one country surrounded by another (7)
- 10 Honest; unobstructed; blatant (4)
- 11 Capital city of South Australia (8)
- 13 Inveigle (6)
- 14 Fragment of song; robbery (6)
- 17 Twin town of Hay-on-Wye (8)
- 19 Hole bored to extract oil (4)
- 21 Eccentric (7)
- 22 Gives approval (5)
- 23 Taverner (9)

## DOWN

- 2 Rich, lush, abundant (7)
- 3 French holiday cottage (4)
- 4 Suit of thick Scottish cloth (6)
- 5 Poussin the younger? (8)
- 6 Move on runway before take-off (4)
- 7 Rome's underlying topography (5,5)
- 8 Native of Tuscany's capital (10)
- 12 German romantic composer, married to Clara (8)
- 15 Adolescent (7)
- 16 A bit of luck or lightning (6)
- 18 Cinnabar or silver Y, for example (4)
- 20 Fellow; small bay (4)

## Saint Mary, Funtington Combined Rota.

### St. Mary, Funtington – March 2022 Sunday Church Rota

Day	Service	Flowers	Brass	Elements	LaMoCs	Intercess	Sidesmen	Readings
6th March Lent 1 <small>Pu</small>	10:00 Family Service		Liz Collet	-	-	Neil & Carolyn Watt	Nigel Brown Anne Maddock	Nigel Brown Deut. 26.1-11 Anne Maddock Luke 4.1-13
13th March Lent 2 <small>AB Pu</small>	10:00 Sung Eucharist			Ann Jones & Maggie Webb	Carolyn Watt	Jane Gummer	David Callas Liz Lancaster	Liz Lancaster Gen. 15.1-12 & 17-18 Deborah Hughes Phil. 3.17-4.1
20th March Lent 3 <small>JM Pu</small>	10:00 Morning Prayer	Lent – No Flowers	Phyllis Goulding	-	-	Anne Maddock	Denise Foster Nick La Hive	Denise Foster Isaiah 55.1-9 Nick La Hive Luke 13.1-9
27th March Mothering Sunday <small>AB Pu</small>	10:00 Sung Eucharist			Claire & Tim Hoare	Kay Knowles	Liz Lancaster	Claire Hoare Kay Knowles	Claire Hoare Exodus 2.1-10 Mini Elliott 2 Cor. 1.3-7
3rd April Lent 5 <small>JM Pu</small>	10:00 Family Service		Miriam Callas	-	-	Borbone Family	Jimmy Faure Andrew Hughes John 12.1-8	Jimmy Faure Isaiah 43.16-21 Andrew Hughes John 12.1-8

If unable to carry out a duty please arrange your own relief & amend notice at back of Church

<b>Parish Services March 2022</b>			
<b>EVERYONE IS WELCOME TO ALL CHURCHES, SERVICES &amp; EVENTS!</b>			
<i>Day</i>	<i>Time</i>	<i>Event</i>	<i>Place</i>
Wed 2 <sup>nd</sup> March	10.30am	Said Eucharist	St Mary, Funtington
Ash Wednesday	11.00am	Coffee Hour	Church Room, Funtington
Sun 6 <sup>th</sup> March	9:00am	Holy Communion	St Andrew, West Stoke
Lent 1	10:00am	Family Service	St Mary, Funtington
Wed 9 <sup>th</sup> March	10.30am	Said Eucharist	St Mary, Funtington
	11.00am	Coffee Hour	Church Room, Funtington
Sun 13 <sup>th</sup> March	9:00am	Holy Communion (BCP)	St Mary, Sennicotts
	10:00am	Sung Eucharist	St Mary, Funtington
Wed 16 <sup>th</sup> March	10.30am	Said Eucharist	St Mary, Funtington
	11.00am	Coffee Hour	Church Room, Funtington
Sun 20 <sup>th</sup> March	9:00am	Holy Communion	St Andrew, West Stoke
	10:00am	Morning Prayer	St Mary, Funtington
Wed 23 <sup>rd</sup> March	10.30am	Said Eucharist	St Mary, Funtington
	11.00am	Coffee Hour	Church Room, Funtington
Sun 27 <sup>th</sup> March	9:00am	Holy Communion (BCP)	St Mary, Sennicotts
	10:00am	Sung Eucharist	St Mary, Funtington
Wed 30 <sup>th</sup> March	10.30am	Said Eucharist	St Mary, Funtington
	11.00am	Coffee Hour	Church Room, Funtington
Sun 3 <sup>rd</sup> April	9:00am	Holy Communion (BCP)	St Andrew, West Stoke
	10:00am	Family Service	St Mary, Funtington

Events may change dependent upon COVID-19 restrictions in force on the day.

BCP – Book of Common Prayer

Eucharist – ‘Thanksgiving’ – Service of Communion with Hymns

See PARISH WEBSITE and CHURCH NOTICEBOARDS  
for ALL INFORMATION & UPDATES:  
[www.funtingtonweststoke.com](http://www.funtingtonweststoke.com)

**Deadline for Magazine content for the March Edition  
19th March 2022  
Please send to: [editorfuntingtonmag@gmail.com](mailto:editorfuntingtonmag@gmail.com)**